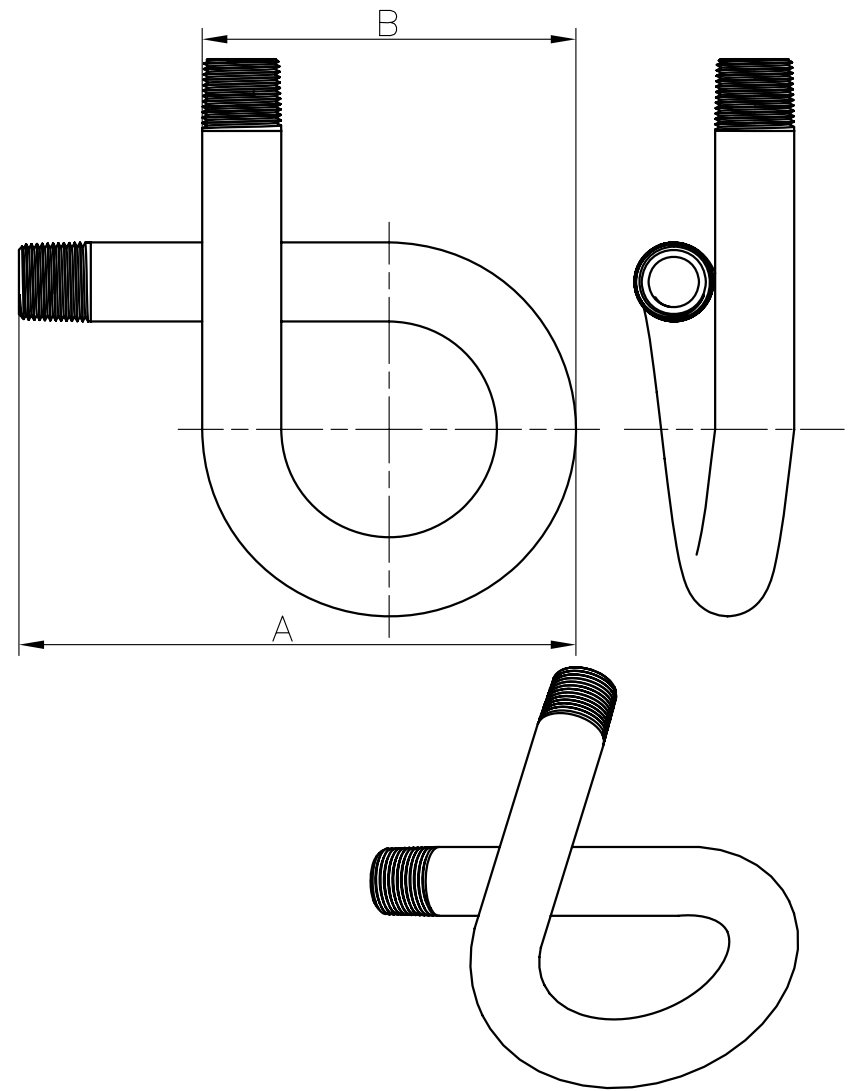


SPECIFICATIONS				
MODEL NO.	MATERIAL	CONNECTION	SIZE	
			A	B
SP1110	SCH 40 WELDED STEEL	1/4NPT	4.25(107.95)	2.625(66.675)
SP1210		1/2NPT	6.5(165.1)	4.0(101.6)
SP1120	SCH 40 SEAMLESS PIPE BRASS	1/4NPT	4.25(107.95)	2.625(66.675)
SP1220		1/2NPT	6.5(165.1)	4.0(101.6)
SP1130	SCH 40 SS304 WELDED PIPE	1/4NPT	4.25(107.95)	2.625(66.675)
SP1230		1/2NPT	6.5(165.1)	4.0(101.6)
SP1140	SCH 40 SS316 WELDED PIPE	1/4NPT	4.25(107.95)	2.625(66.675)
SP1240		1/2NPT	6.5(165.1)	4.0(101.6)
SP1111	SCH 80 WELDED STEEL	1/4NPT	4.25(107.95)	2.625(66.675)
SP1211		1/2NPT	6.5(165.1)	4.0(101.6)
SP1121	SCH 80 SEAMLESS PIPE BRASS	1/4NPT	4.25(107.95)	2.625(66.675)
SP1221		1/2NPT	6.5(165.1)	4.0(101.6)
SP1131	SCH 80 SS304 WELDED PIPE	1/4NPT	4.25(107.95)	2.625(66.675)
SP1231		1/2NPT	6.5(165.1)	4.0(101.6)
SP1141	SCH 80 SS316 WELDED PIPE	1/4NPT	4.25(107.95)	2.625(66.675)
SP1241		1/2NPT	6.5(165.1)	4.0(101.6)



Dimensional Tolerances Unless Otherwise Specified  
Machining  
Fraction: ±1/64, Angle: ±0.005  
Decimals: Two Place ±0.01 Three Place ±0.005  
Unmarked Surface Finish 125 or Beeffc  
Castings:  
<1": ±1/64", 1"--12": ±1/32", >12": ±1/16"  
Angles: ±1", Concentricity .03 T.L.R.

REV	DESCRIPTION			BY	DATE
	BY	DATE		BY	DATE
DRAWN	Hongwang	03/24/12	CHECKED	Binmeng	03/24/12
SUPERSEDED	Yuanqingniu	03/24/12	APPROVAL	Rongsun	03/24/12
ADD	Server\jishu-public\technical\syphons				

**COIL SYPHONS (90°)**

<b>MARK</b>			<i>Howe</i>
<b>HOWE PRECISION INDUSTRIAL INC.</b>			